



# COLLET CHUCKS



- We offer the largest selection of high productivity collet chucks
- Most items ship from stock the same day as receipt of order
- All our products are warranted for one year from date of original purchase
- Made in the USA 



## SALES

FREE IN-PLANT  
COST-JUSTIFICATION,  
ENGINEERING ANALYSIS



## SERVICE

INSTALLATION BY YOUR LOCAL ATS SERVICE  
ENGINEERS - OUR TECHNICIANS TRAIN YOUR  
OPERATING PERSONNEL



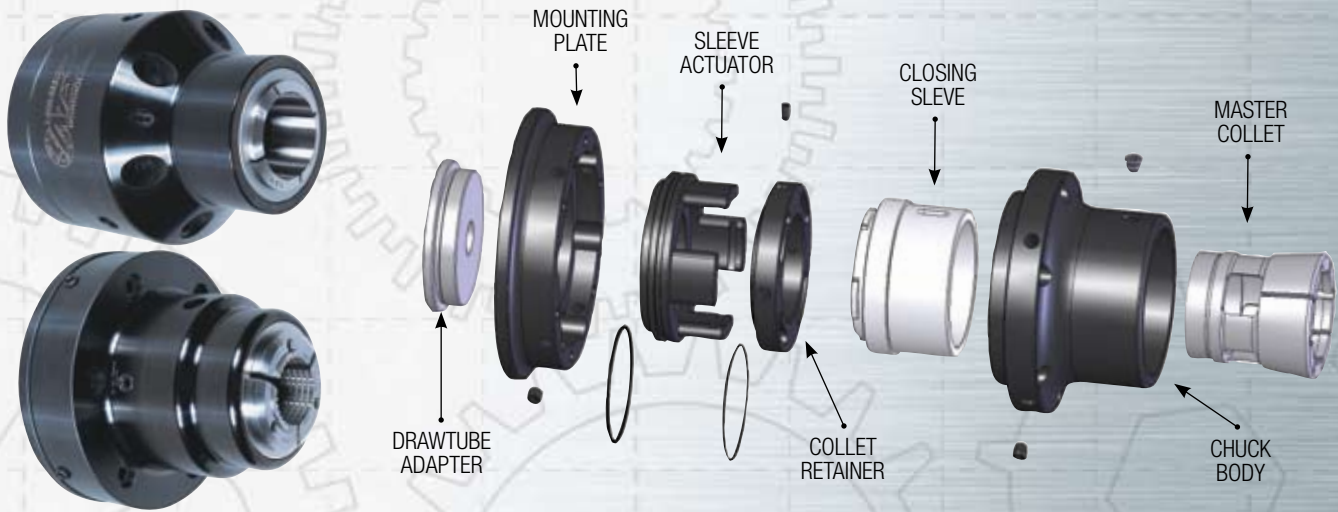
## SUPPORT

FIX-IT-FIRST,  
ASK-QUESTIONS-LATER  
SERVICE PHILOSOPHY



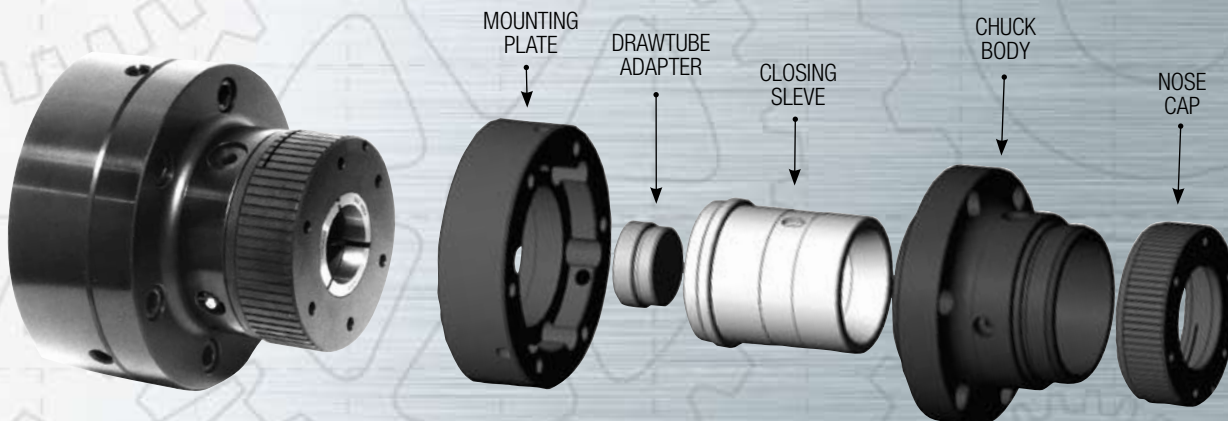
# COLLET CHUCKS

## LOW PROFILE TRUE LENGTH COLLET CHUCKS



- Innovative patented design
- Fixed collet position ensures linear accuracy
- Ideal for secondary operations, sub-spindle applications and parts transfers
- High RPM's, no centrifugal grip force loss
- Works with servo style barfeeds when using a turret stop
- Capacity range from 1/16" to 4"
- Utilizes standard C, J and S Style Collets
  - 7 degrees closing angle on all J & S style systems
  - 10 degrees closing angle on all C style systems
- Superior tool clearance with reduced body diameters
- Adjustability feature enables user to adjust the T.I.R. of the system

## NOSE CAP TRUE LENGTH COLLET CHUCKS



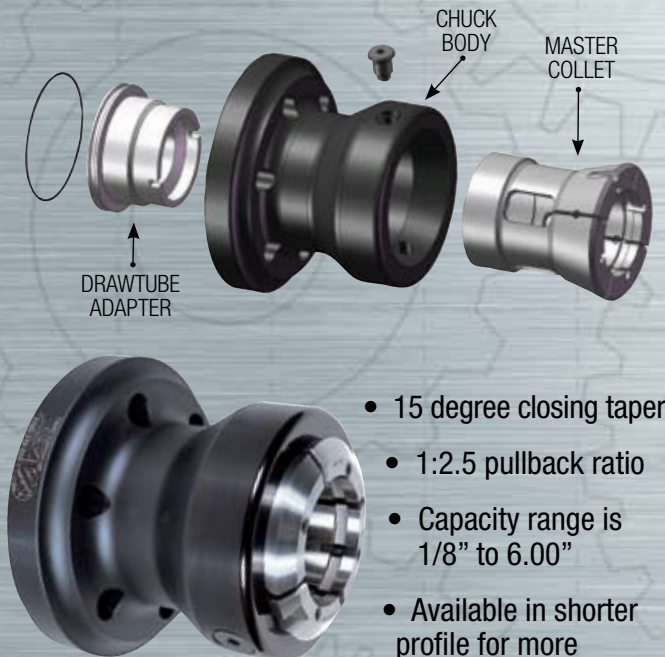
- Push to close ensures linear accuracy
- Ideal for secondary operations, sub-spindle applications and parts transfers
- Works with servo style barfeeds when using a turret stop
- Utilizes standard Index and B & S style collets
- System is adaptable to accept multibore collets
- Adjustable feature enables user to adjust for T.I.R.

# PULL BACK COLLET CHUCKS

## UNIVERSAL PULL BACK FEATURES

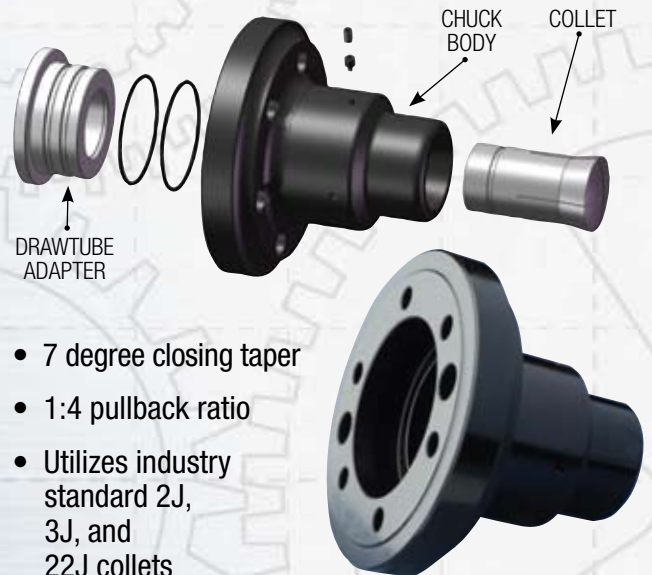
- Cost-effective workholding solution
- Ideal for 1st operation and slug work
- Easy installation with direct mount to the machine spindle
- Actuated by the pullback motion of the drawtube
- Available in C, J and S Style
- Works with servo feed barfeed
- Fast and easy change-over

## S STYLE PULL BACK FEATURES



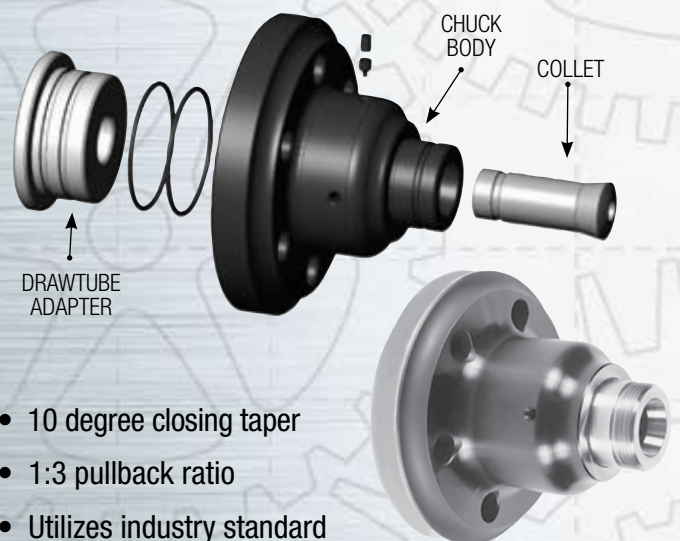
- 15 degree closing taper
- 1:2.5 pullback ratio
- Capacity range is 1/8" to 6.00"
- Available in shorter profile for more z-axis clearance
- Utilizes S style master collet to accept standard S style collet pads
- Warner & Swasey master collet system also available to accept #3, #4, and #5
- Master collet included with every collet chuck system

## J STYLE PULL BACK FEATURES



- 7 degree closing taper
- 1:4 pullback ratio
- Utilizes industry standard 2J, 3J, and 22J collets
- Capacity range is 1/16" to 2-1/4"

## C STYLE PULL BACK FEATURES



- 10 degree closing taper
- 1:3 pullback ratio
- Utilizes industry standard 5C, 16C, 20C, and 25C collets
- Capacity range is 1/64" to 2-1/2"
- Available with step chuck capability which enables slug work up to 8.00" diameter

# COLLET CHUCKS

PLACE DEALER  
STICKER HERE

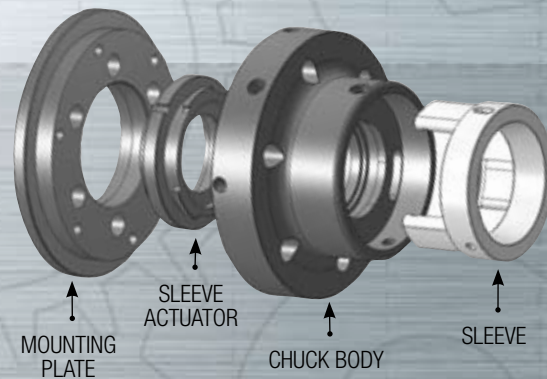
## QUICK CHANGE COLLET CHUCKS

### QUICK CHANGE COLLET CHUCK FEATURES

- Utilizes Hardinge Quick-Change Collets
  - Affordable quick-change collets
  - Less expensive American Standard collets
  - 20 second collet change-over
- Seals & plugs easily replaced minimizing downtime for maintenance
- .0002" T.I.R. guaranteed on closing taper
- 12.45 degree closing taper provides greater gripping force with less pull force from the cyclinder
- Super short body design for greater tool clearance & more Z axis travel
- True parallel gripping (15% greater gripping force than standard collets)
- 3 piece collet with no shank provides true parallel grip and a wider chucking range

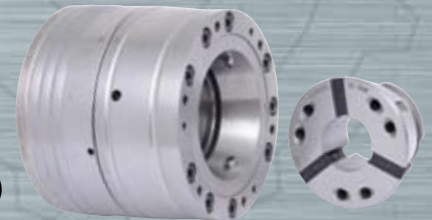
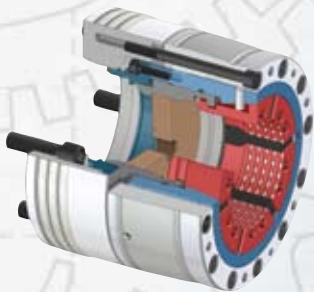
### QUICK CHANGE TRUE LENGTH FEATURES

- Fixed collet position ensures linear accuracy
- Ideal for 1st and 2nd operations, and barfeed applications
- Works with barfeeds when using a turret stop
  - Adjustable feature enables you to adjust for T.I.R.



### HAINBUCH'S SPANNTOP COMBI DEADLENGTH COLLET FEATURES

- Parallel work piece clamping
- Superb accuracy (.0004" TIR and Repeatability)
- Minimum deformation of work piece
- Quick-Change capability (2~3 minute change-over time)



COLLET CHUCKS



BARFEEDS



ROTARY TABLES



AIR CHUCKS



STEADYRESTS

Copyright, March 2008, ATS Systems. All Right Reserved. Specifications subject to change without notice.

**ATS SYSTEMS**

800-321-1833 WWW.ATS-S.COM

949.888.1744 fax 949.888.8336 30222 Esperanza, R.S.M., CA 92688

