



BIG MOUTH™ II

- **Faster production cycle times**
- **Less lathe wear and tear**
- **No Weekly valve maintenance**
- **Safer, test-in-place non-return valves**



SALES

FREE IN-PLANT
COST-JUSTIFICATION,
ENGINEERING ANALYSIS



SERVICE

INSTALLATION BY YOUR LOCAL ATS
SERVICE ENGINEERS, - OUR TECHNICIANS
TRAIN YOUR OPERATING PERSONNEL



SUPPORT

FIX-IT-FIRST,
ASK-QUESTIONS-LATER
SERVICE PHILOSOPHY

2-YEAR WARRANTY
STANDARD TERM WITH ATS
INSTALLATION AND TRAINING



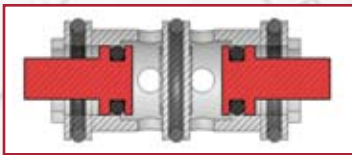
FORMERLY ATS WORKHOLDING & SMW SYSTEMS

BIG MOUTH™ II

Leading-Edge Technology

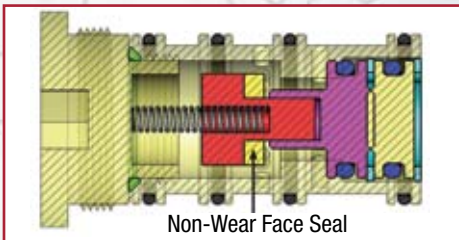
ALL BIG MOUTH CHUCKS-
New Face-Seal Type Non-Return
Valve: No Weekly Maintenance

Old Design: High Maintenance Sliding Mechanism



- Depends on 5 sliding "O-rings" for sealing
- Requires weekly disassembly to clean and lube
- Valve removed from chuck during pressure test
- Valve not tested for leaks

New Design: Face Seal, Requires No Weekly Maintenance

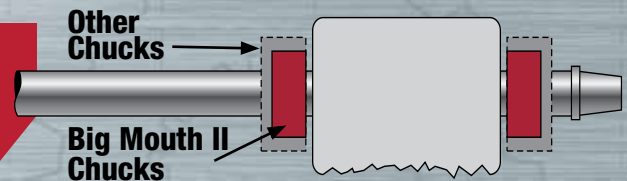


- Long life, no weekly maintenance required
- Pressure test chuck and valves with valve in place



UNIQUE TO BT MODEL TUBULAR SERIES

Smaller Profile Design: Faster Cycle Times, Less Wear and Tear.
Valve: No Weekly Maintenance



Faster spindle acceleration and deceleration
moment of inertia reduced up to 50%

Reduced wear and tear on spindle drive and brake
weight reduced on most popular sizes by 40%

Correct clamping pressure for tubular work pieces
reduced piston size and air volume, faster actuation

Lower operating cost
less electrical energy consumed



JAW JOGGING

Exclusive Feature

- Other brands require the chuck to fully open or fully close each actuation.
- Only with the Big Mouth™ II can you jog the jaws open slightly to facilitate shimming a crooked pipe to make the end run true.
 - ▶ Close Jaws, jog the spindle and note workpiece run-out.
 - ▶ Jog Jaws open 1/4" or whatever amount you like, insert shims, close jaws.
 - ▶ Repeat as required With Big Mouth™ II, it's easy.

EASY MOUNT

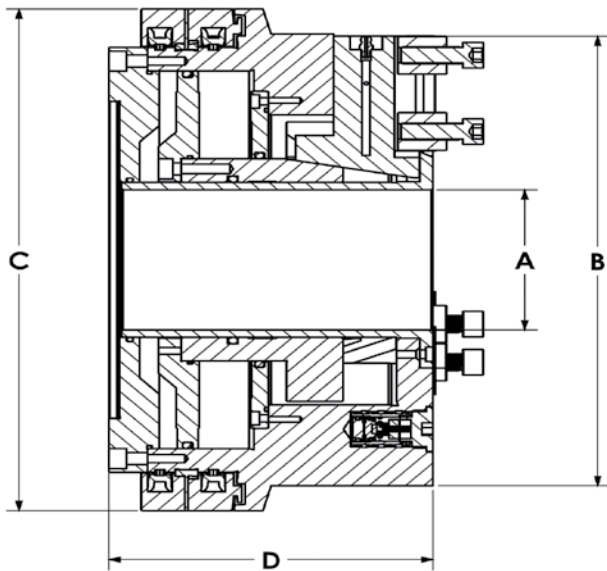
No Disassembly and Reassembly on Machine

- Assembled chuck bolts directly to adapter plate
- No cumbersome chuck assembly on the lathe spindle
- Mounting bolts do not require internal sealing

**All Other Large-Bore Chucks Are
Now Obsolete**

Big Mouth™ II

PLACE DEALER
STICKER HERE



SPECIFICATIONS

Standard Models for General Chucking Application

Chuck Model		BP-200-52	BP 265-80	BP 315-105	BP 480-185	BP 500-230	BP 640-275	BP 800-375
Nominal Size		8"	10"	13"	19"	22"	25"	31"
Through Hole	A	2.05	3.15	4.13	7.28	9.06	10.83	14.76
Face Diameter	B	8.1	10.4	13.2	18.9	22.4	25.2	31.5
Rear Diameter	C	11.8	14.6	14.6	20.9	22.4	27.0	33.5
Length	D	5.3	5.8	6.2	8.8	8.8	10.3	12.0
Jaw Stroke/Jaw	In.	.165	.197	.197	.334	.334	.394	.472
Jaw Serration		1/16 x 90	1/16 x 90	1/16 x 90	3/32 x 90	3/32 x 90	3/32 x 90	3/32 x 90
Maximum Speed	RPM	2800	2200	2200	1500	1300	1000	750
Max. Operating Pressure	PSI	120	120	120	120	120	120	120
Grip Force @ 90 PSI	Lbs. Total	13950	21400	19300	41860	44187	61600	61600

Chuck Model		BT 4.1 ES	BT 7.3 ES	BT 10.8 ES	BT 12.8 ES	BT 14.8 ES
Through Hole	In.	4.13	7.28	10.82	12.80	14.76
Chuck Length	In.	7.9	11.1	11.1	12.1	12.10
Jaw Stroke/Jaw	In.	0.6	1.0	1.0	1.0	1.0
Jaw Serration		1/16 x 90	3/32 x 90	3/32 x 90	3/32 x 90	3/32 x 90
Swing Clearance	In.	14.9	21.7	26.7	29.4	31.4
Maximum Speed	RPM	2000	1300	1100	900	750
Normal Operating Pressure Range	PSI	60-90	60-90	60-90	60-90	60-90
Max. Operating Pressure	PSI	120	120	120	120	120
Weight	Lbs.	220	500	700	1200	1300

BT Series-Extended Jaw Stroke Models for Tubular Applications



COLLET CHUCKS



QUICK JAW CHUCKS



BARFEEDS



ROTARY TABLES



STEADYRESTS

Copyright, March 2008, ATS Systems. All Right Reserved. Specifications subject to change without notice.

ATS SYSTEMS

800.321.1833 WWW.ATS-S.COM

949.888.1744 fax 949.888.8336 30222 Esperanza, R.S.M., CA 92688

FORMERLY ATS WORKHOLDING & SMW SYSTEMS

